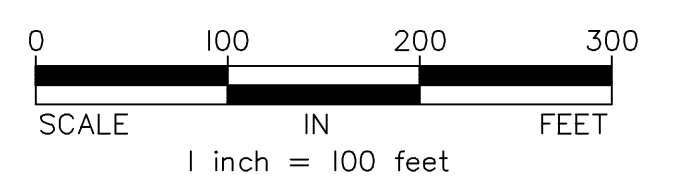
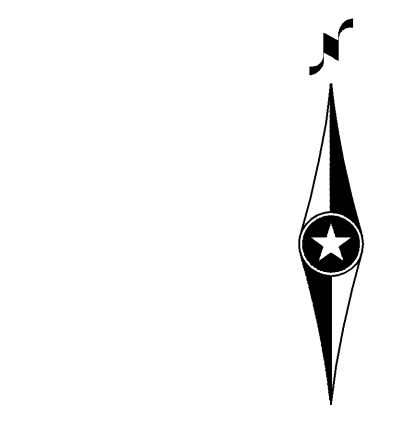
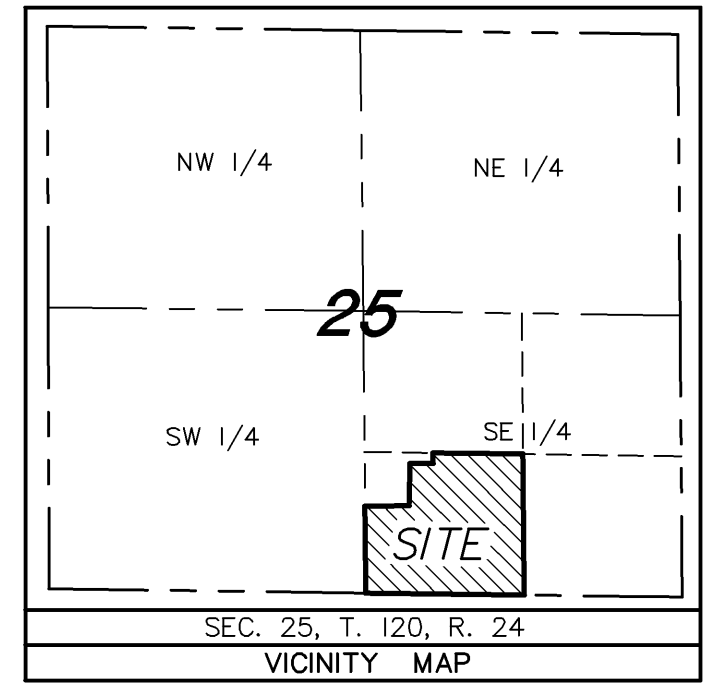
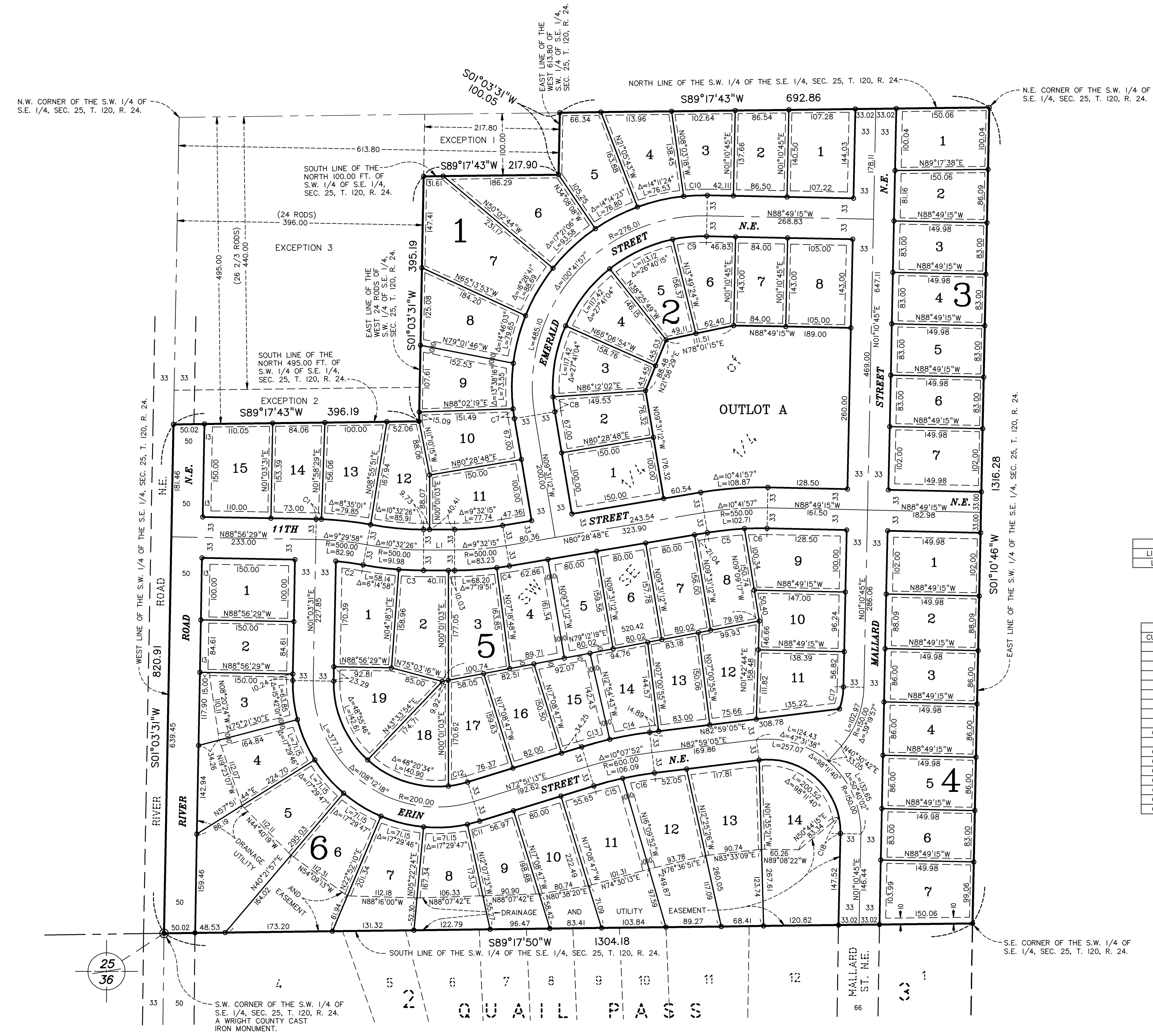


SCHENDELS FIELD FIRST ADDITION



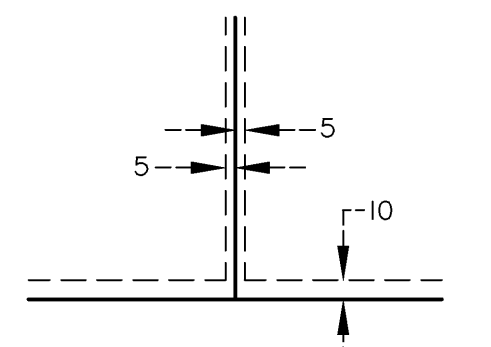
LINE TABLE		
LINE	LENGTH	BEARING
L1	50.14	N89°58'57"W

CURVE TABLE			
CURVE	LENGTH	RADIUS	DELTA
C1	8.52	533.00	0°54'57"
C2	44.40	467.00	5°26'51"
C3	39.92	533.00	4°17'28"
C4	20.53	533.00	2°12'24"
C5	60.02	517.00	6°39'04"
C6	36.53	517.00	4°02'53"
C7	15.94	309.01	2°57'18"
C8	24.26	243.01	5°43'15"
C9	54.88	243.01	12°56'19"
C10	38.36	309.01	7°06'46"
C11	20.43	233.00	5°01'24"
C12	31.87	167.00	10°55'58"
C13	46.78	633.00	4°14'04"
C14	65.14	633.00	5°53'48"
C15	48.29	567.00	4°52'46"
C16	51.97	567.00	5°15'06"
C17	36.31	117.00	13°46'50"
C18	26.74	117.00	13°05'36"

For the purposes of this plat, the South line of the S.W. 1/4 of S.E. 1/4, Sec. 25, T. 120, R. 24, is assumed to bear South 89°17'50" West.

- ⊙ Denotes a Wright County cast iron Monument Found
- Denotes a 1/2 inch x 14 inch iron monument with a plastic plug stamped R.L.S. 21729, to be set within 1 year of recording this plat.
- Denotes an Iron Pipe Found

Drainage and Utility Easements shall be shown as thus:



Being 10 feet in width and adjoining right-of-way lines, unless otherwise indicated, also being 5 feet in width and adjoining lot lines, unless otherwise indicated, as shown on the plat.